



**ProVista**<sup>®</sup>

Sashless Double Hung Window

**UNINTERRUPTED VIEW,  
MAXIMUM VENTILATION.**

1300 ALSPEC (1300 257 732)  
[alspec.com.au](http://alspec.com.au)

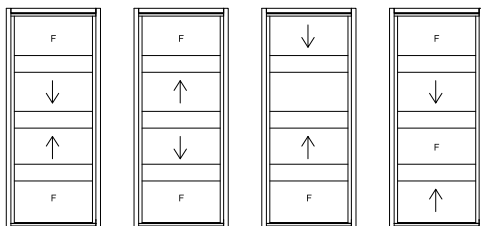
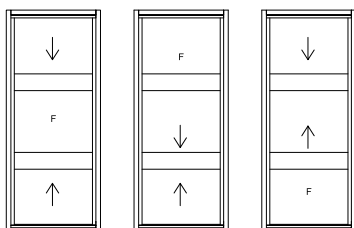
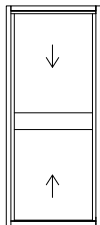
**alspec**  
ALUMINIUM SYSTEMS  
SPECIALISTS

# Sashless Double Hung Window

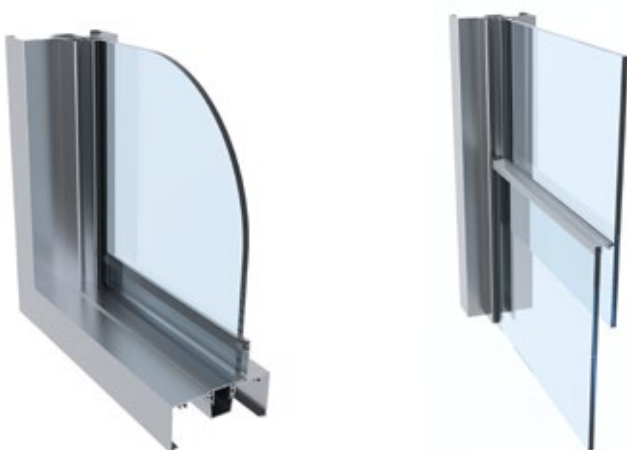
The ProVista Sashless Double Hung Window offers unobstructed views whether the window is open or closed. The two panes of glass slide smoothly and effortlessly past each other with a minimalist design.

It creates a clean and modern aesthetic feel while also providing maximum ventilation.

## Typical Configurations



## CAD Cross Sections



## Key Features

- 2, 3, 4 Pane configurations
- New build and retrofit compatible
- Snap in jambs providing concealed fixings and pulleys
- Vent lock and key locking options
- Ease of assembly
- Excellent water, bushfire, acoustic and energy performance

## Technical Specifications

Configuration	Frame Width	
	6mm Glaze	10mm Glaze
2 Panel	41mm	49mm
3 Panel	59mm	71mm
4 Panel	76mm	93mm
<b>Maximum Product Performance</b>		
ULS (Pa)	4500	
Water (Pa)	300	
<b>Maximum Recommended Sizes</b>		
Sash Height	1800mm	
Sash Width	Dependant on sash weights	
Sash Weight	STD Pulley 25kg	WIDE Pulley 40kg
<b>Acoustic Performance</b>		
Glass Type	Rw (C; C <sub>tr</sub> )	
6.38mm Laminate	28 (-1; -2)	
10.38mm Laminate	31	
Primary Window	Secondary Window	Rw (C; C <sub>tr</sub> )
Awning 6.38mm Laminate	ProVista 6.38mm Laminate	47 (-2; -5)
<b>Glazing Details</b>		
Single Glazed	6mm & 10mm	
<b>Compatible Systems</b>		
McArthur Evo Centre Pocket Framing		

